

Excerpts from **“Navajo-Churro Registration Photos and Fleece Samples”**

by Maria Amodei, previously run in *The Catch Pen*

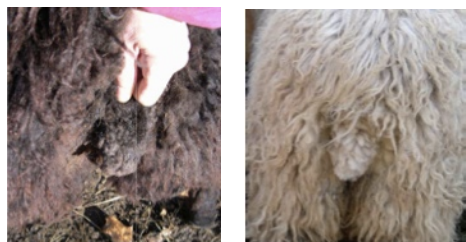
Side Photos



Have someone hold the sheep if they won't cooperate.

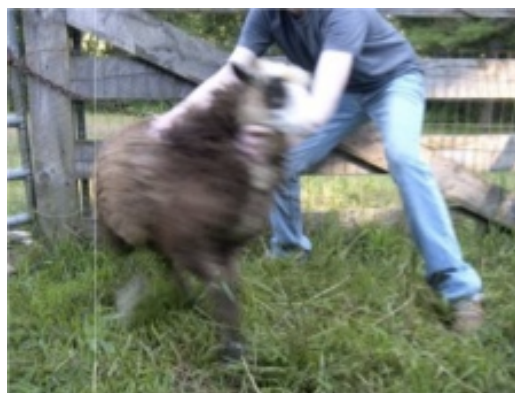
Along with the registration paperwork, registration requires a CLEAR side shot showing the entire sheep in full fleece with the legs visible, a photo showing the tail, and a photo showing the horns clearly for rams. The horn photo needs to show all horns to show that there is clearance between the horns and the head. The tail photo is taken from the rear, and needs to show the outline of the tail. This is easiest when the animal is recently shorn. If the animal is not shorn, you can trim up the tail with hand shears or scissors. For dark animals try a piece of cardboard under the tail so it can be seen clearly in contrast to the rump. None of these photos needs to be artistic, beautiful or carefully staged. They do need to be clear and of good quality printed on photo paper so the inspectors can see the sheep to evaluate.

Tail Photos



I always wonder what the photo lab people think when they see tail photos.

(As you can see, digital cameras are a real plus. You get plenty of these.)



Fleece Samples



The fleece sample needs to show the under coat and top coat. It should be taken from the middle of the side of the sheep.

You want to cut it right next to the skin so that you get the shorter undercoat.



Head Photos for Horns



I'd prefer the horn not be hidden behind an ear.

All photographs are taken in bright natural light outdoors.

Sheared tail photos leave no question as to what it looks like.

If horns are close, shear the cheeks to show they don't touch.

Fleece samples should be approx. 1 inch square at the base.